

## X-VIEW 3D PAN

Revolutionize your imaging with our CBCT: unparalleled 3D, 2D and CEPH insights for precise treatment planning.

### X-VIEW 3D ONLY

Featuring essential functions and a user-friendly interface, this system allows for the effortless capture of sharp, detailed 3D images with just a single click.

### X-VIEW 3D PAN

Specifically designed for orthodontists, endodontists, and implantologists, this system is ideal for medium to large dental practices, delivering precision and efficiency across a wide range of procedures.

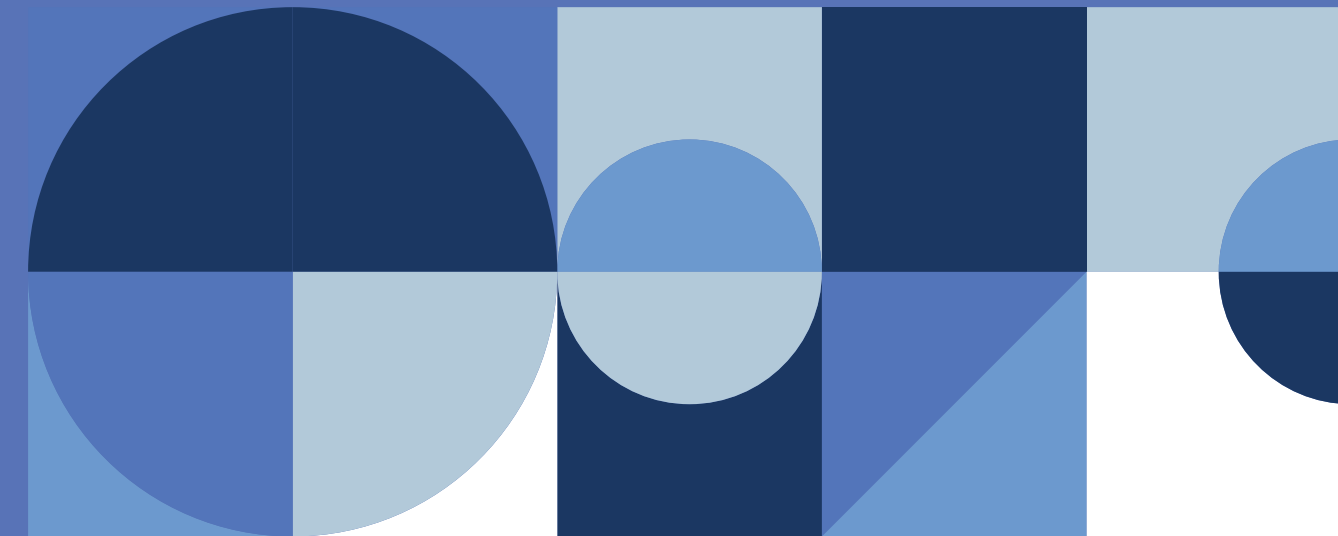
### X-VIEW 3D PAN CEPH

In addition to its exceptional 3D imaging capabilities, the X-VIEW 3D PAN CEPH also offers functionalities for 2D panoramic and cephalometric radiographs, making it a versatile tool for comprehensive diagnostic imaging.

- Pulsed DC X-Ray Generator
- Advanced Reconstruction Techniques (ART)
- 3D Volumetric Images with Variable FOV (from 5x5 to 11xØ14)
- Three Resolution Settings (HD, Standard, Lite Format)
- Modern Software Tools
- Single Sensor for 2D and 3D Imaging
- Dedicated CEPH detector for Workflow Optimization
- Cephalometric Imaging with Single-Shot Technology

Discover a world of images

trident



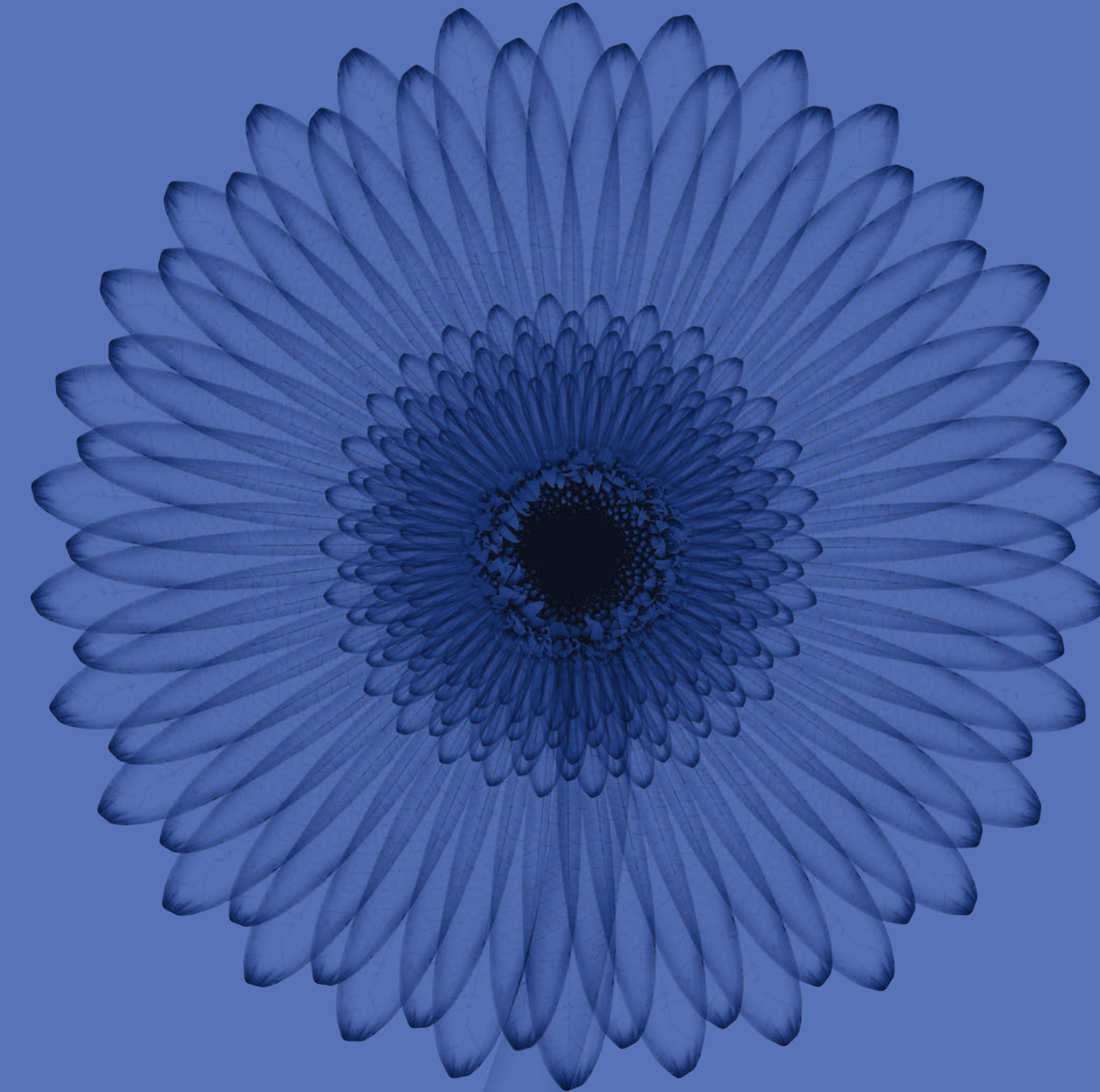
**Trident S.r.l.**  
Via Artigiani, 4 25014 Castenedolo, ITALY  
Phone +39 030 2732485  
info@trident-dental.com

www.trident-dental.com

TPC-ENR1-PRODUCT CATALOGUE 2024

## PRODUCT CATALOGUE

# Unmatched Detail, Unrivalled Quality



Discover a world of images

trident

# X-VIEW

The X-VIEW family offers multifunctional digital radiography equipment tailored to meet your expectations. With versatile systems designed for a wide range of applications, X-VIEW allows you to perform all types of examinations, from general dentistry to specialized treatments.



Whether you are performing oral surgeries, TMJ procedures, orthodontic planning, or implant assessments, X-VIEW delivers the precision and adaptability your practice requires.

trident



## X-VIEW 2D PAN

State-of-the-art technology for efficient diagnoses in less time and with high precision. Obtain sharp and accurate 2D images faster and with reduced radiation exposure.



CMOS Detector
Optimal focal trough
High Frequency DC X-Ray Generator
30x15 cm Adult panoramic in 15.5 s
30x13 cm Child panoramic in 14.8 s
25x30 cm AP/LL cephalograms
Carpus images
Cephalometric Imaging with Single-Shot Technology

Discover a world of images

## X-VIEW 2D PAN FOCUS

Image reconstruction technology that completely exceeds Traditional methods to capture panoramic images.

With the new X-VIEW 2D PAN FOCUS, images are so sharp and clear that no further processing is required. By identifying the zones where the region of interest is best positioned, the autofocus function delivers the sharpest, highest-resolution images in the shortest possible time.

X-VIEW 2D PAN and X-VIEW 2D PAN FOCUS are both available in the following configurations:

### X-VIEW 2D PAN BASIC

Designed to help dentists make the transition from intraoral to extraoral digital imaging systems, X-VIEW 2D PAN BASIC efficiently captures 2D panoramic images, delivering results in less time while minimising radiation dose to the patient.

### X-VIEW 2D PAN UP

The X-VIEW 2D PAN UP has been designed with the mechanical structure and user interface needed to easily integrate the cephalometric option in the field. The upgrade process involves the addition of a cephalometric arm and a dedicated DR flat panel detector with single-shot technology.

### X-VIEW 2D PAN CEPH

The 2-in-1 model of the X-VIEW family is a versatile and integrated system that combines the benefits of 2D panoramic and cephalometric imaging. It is ideal for general dentists, periodontists, orthodontists and other specialists working in medium-sized practices, hospitals and clinics, providing a comprehensive imaging solution to meet a wide range of clinical needs.

## CMOS INTRAORAL SENSOR

Obtain the highest quality in no time, with a lower dose of radiation.



### I-VIEW GOLD

The top-tier intraoral sensor that offers exceptional image quality without the need for post-processing.

Exclusive calibration files that optimize the image for a fast, clear and highly detailed diagnostic exam.

Pixel Size of 18 micron for HD images
TWAIN and Bridge modules included
Larger active surface
Thinner body

### I-VIEW SILVER

Reliable performance with high-quality images you can trust.

Pixel size 20 micron; image resolution 25lp/mm
ED Technology (Automatic Exposure Detection)
Simplicity in details
Only 4,4 mm thickness

**All Trident intraoral sensors are equipped with Deep-View software to obtain and manage outstanding images . The licence ensures multiuser connection, up to 10 concurrent users. I-View sensors are IP68-rated: resistant to water and dust exposure for long-lasting performance!**

## INTRAORAL X-RAY UNIT

A modern and clean design for a long and reliable service life. Little details, great results.



### RiX-70

Experience a durable traditional X-ray unit that delivers excellent images with lasting reliability.

The classic, compact and lightweight X-Ray unit model, designed to ensure long durability with excellent results.

Solid and ergonomic design
0.7mm focal spot
Automatic exposure time configuration
Easy to install and maintain
Perfect results with any image receptor: intraoral sensor and phosphor plates
Friendly-user control panel

Mobile / Wall mounted

### RiX70 DC

Discover advanced 0.4 focal spot DC X-ray unit: sleek design and exceptional performance combined.

High frequency intraoral X-Ray generator. Obtain impressive images and amazing results with all the advantages of the last electronic technology: get more than you could have ever imagined.

Automatic voltage transformer
0.4mm focal spot
Reduction of radiation dose
Tube voltage selector: 60-65-70 kV
Automatic setting of exposure time

Mobile / Wall mounted / Remote timer

trident